



# MONTHLY MEMBERSHIP PROGRESS REPORT

District 321 D

Results as of: 06/30/2019

GMT: ANIL TULSYAN

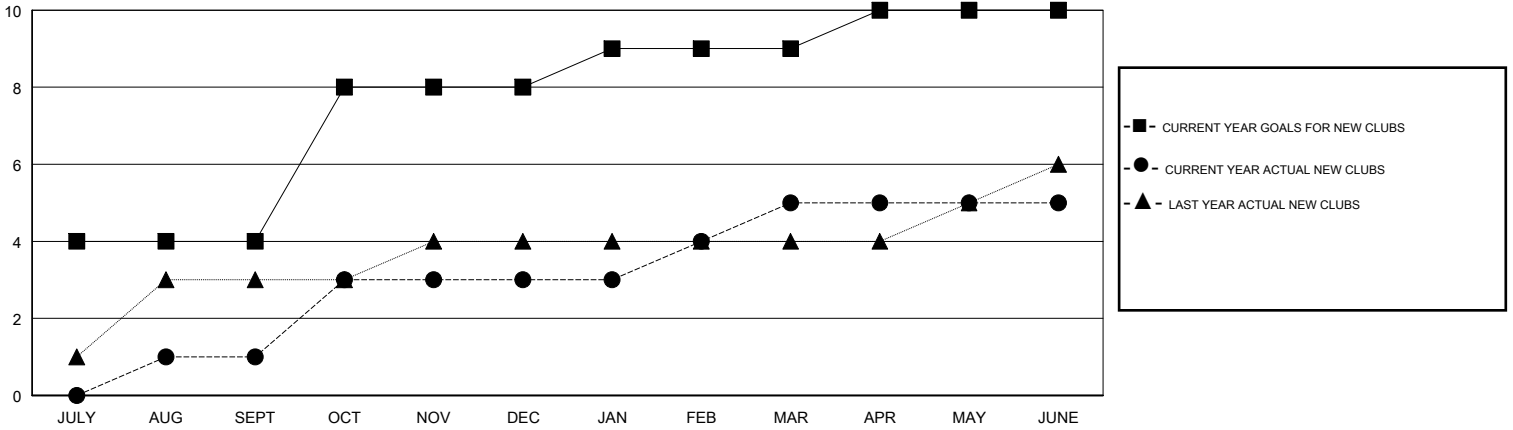
LOCATION INDIA

GMT CA

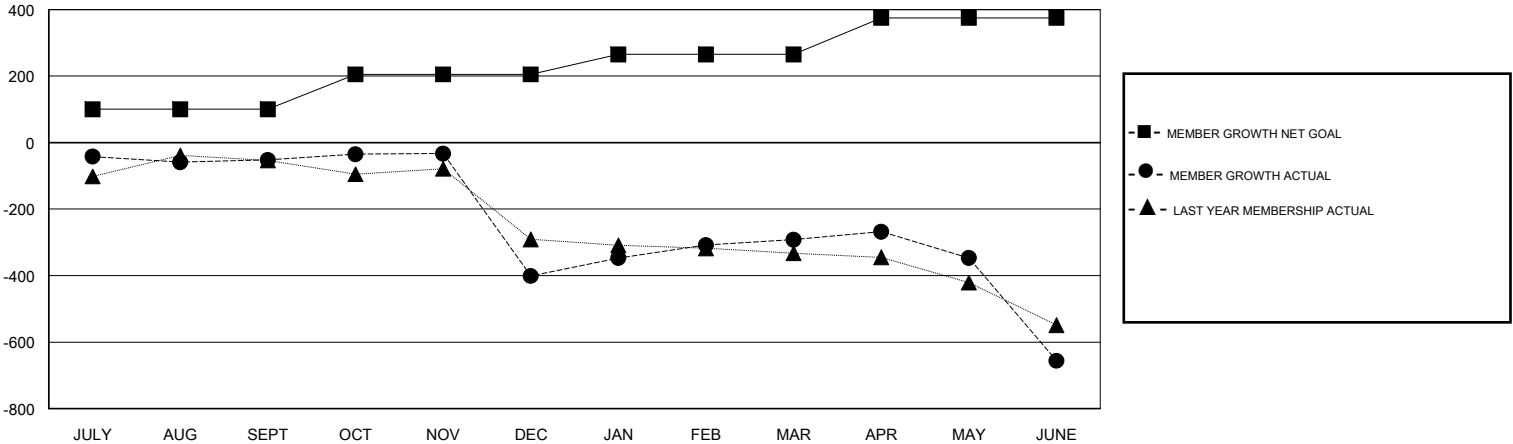
| Clubs                 |               |           |               |
|-----------------------|---------------|-----------|---------------|
| RESULTS FOR 2018-2019 |               |           |               |
| QUARTER               | NEW CLUB GOAL | NEW CLUBS | DROPPED CLUBS |
| JULY/AUG/SEPT         | 4             | 1         | 0             |
| OCT/NOV/DEC           | 4             | 2         | 11            |
| JAN/FEB/MAR           | 1             | 2         | 1             |
| APR/MAY/JUNE          | 1             | 0         | 4             |

| Members               |                        |                      |  |
|-----------------------|------------------------|----------------------|--|
| RESULTS FOR 2018-2019 |                        |                      |  |
| QUARTER               | MEMBER GROWTH NET GOAL | MEMBER GROWTH ACTUAL | DROPPED MEMBERS ACTUAL (including transfers) |
| JULY/AUG/SEPT         | 100                    | 113                  | 132  |
| OCT/NOV/DEC           | 105                    | 114                  | 446  |
| JAN/FEB/MAR           | 60                     | 300                  | 107  |
| APR/MAY/JUNE          | 110                    | 235                  | 538  |

GOALS AND ACTUAL NEW CLUBS CUMULATIVE



GOALS AND ACTUAL MEMBERS CUMULATIVE



|                   |
|-------------------|
| DROPPED CLUBS: 16 |
|-------------------|

89 CLUBS OF 140 ADDED 1 OR MORE NEW MEMBERS

| GENDER DISTRIBUTION                    |                |
|--|----------------|
| MALE                                   | 3,117 (75.13%) |
| FEMALE                                 | 1,032 (24.87%) |
| Women Percentage Fiscal Year Goal: 30% |                |

| DROPPED MEMBERS |              |
|-----------------|--------------|
| DECEASED        | 13           |
| CLUB CANCELLED  | 326          |
| OTHER           | 884          |
| <b>TOTAL</b>    | <b>1,223</b> |

[CLICK HERE FOR CUMULATIVE MEMBERSHIP DATA](#)

|                                 |       |
|---------------------------------|-------|
| TOTAL FAMILY UNIT MEMBERS       | 1,945 |
| FAMILY MEMBERS PAYING HALF DUES | 1,082 |